

Pomoli e maniglie
Knobs and handles

PAG. 505

Pomoli per box doccia e porte in vetro
Knobs for shower rooms and glass doors

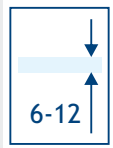
PAG. 508

Maniglioni per box doccia e porte in vetro
Handles for shower rooms and glass doors

PAG. 521

Maniglie per porte scorrevoli
Glass sliding doors handles

INDICE / INDEX



SPESSORE VETRO
GLASS THICKNESS



LARGHEZZA MAX DELLA PORTA
MAX DOOR WIDTH



LARGHEZZA MINIMA DELLA PORTA
MINIMUM DOOR WIDTH



PESO MAX DELLA PORTA - 2 CERNIERE
MAX DOOR WEIGHT - 2 HINGES



FINITURA CROMO LUCIDO
BRIGHT CHROME FINISH



FINITURA NICKEL SATINATO (SIMILINOX)
SATIN NICKEL FINISH



FINITURA CROMO PERLA
PEARL CHROME FINISH



FINITURA NERO OPACO
MATT BLACK FINISH



FINITURA ORO LUCIDO
BRIGHT GOLD FINISH



FINITURA INOX LUCIDO
POLISHED STAINLESS STEEL FINISH



FINITURA INOX SATINATO
SATIN STAINLESS STEEL FINISH



FINITURA ALLUMINIO ANODIZZATO NATURALE
NATURAL ANODIZED ALUMINIUM FINISH



FINITURA ALLUMINIO ANODIZZATO BRILLANTE
BRIGHT ANODIZED ALUMINIUM FINISH

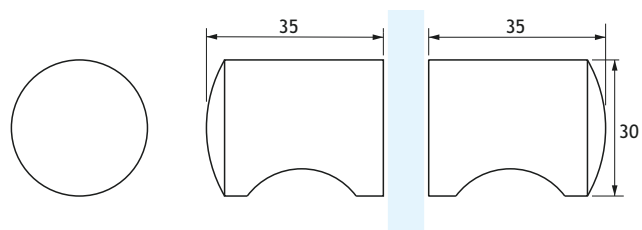


FINITURA ALLUMINIO ANODIZZATO NERO
BLACK ANODIZED ALUMINIUM FINISH



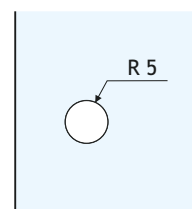
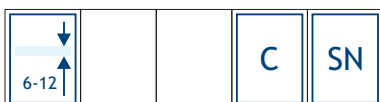
FINITURA ANODIZZATA SIMIL-INOX
SSS LIKE ANODIZED ALUMINIUM FINISH

SK02

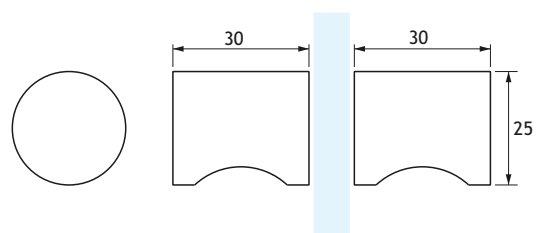
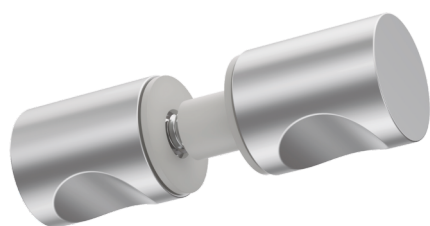


Coppia di pomoli cilindrici con presa per box doccia e porte in vetro
Meccanismo interno di centratura
Realizzati in fusione di lega AC41A ad alta resistenza

Pair of cylindrical knobs with handle grip for shower rooms and glass doors
Inner centering device
Diecast high resistance AC41A alloy manufacturing

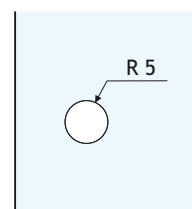


SK03

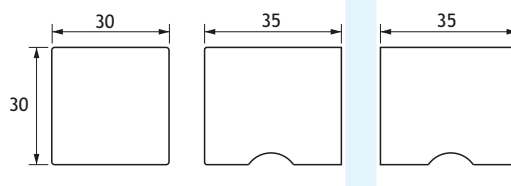
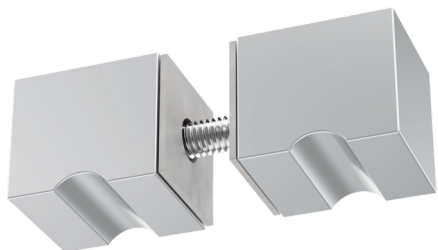


Coppia di pomoli cilindrici con presa per box doccia e porte in vetro
Meccanismo interno di centratura
Realizzati in fusione di lega AC41A ad alta resistenza

Pair of cylindrical knobs with handle grip for shower rooms and glass doors
Inner centering device
Diecast high resistance AC41A alloy manufacturing

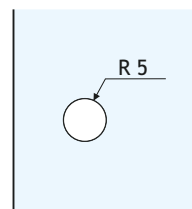


SK04

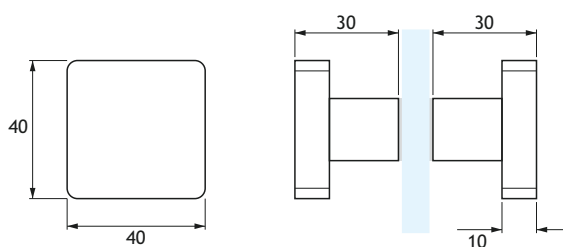
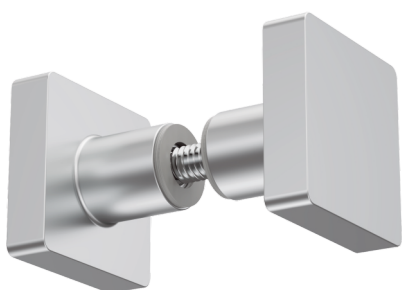


Coppia di pomoli a sezione quadrata con presa per box doccia e porte in vetro
Meccanismo interno di centratura
Realizzati in fusione di lega AC41A ad alta resistenza

Pair of square section knobs with handle grip for shower rooms and glass doors
Inner centering device
Diecast high resistance AC41A alloy manufacturing

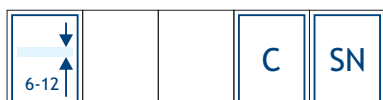
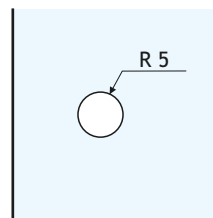


SK05

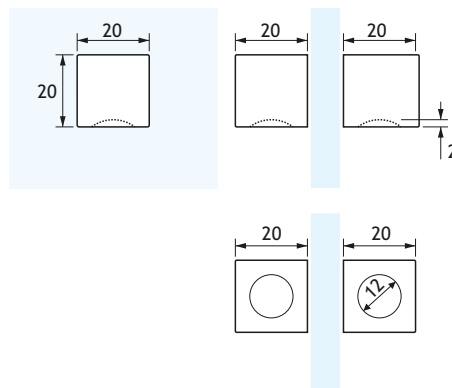
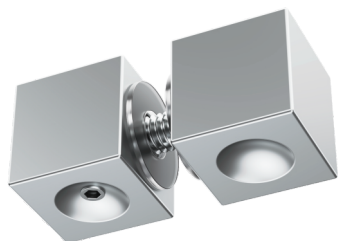


Coppia di pomoli per box doccia e porte in vetro
Meccanismo interno di centratura
Realizzati in fusione di ottone

Pair of knobs for shower rooms and glass doors
Inner centering device
Diecast brass manufacturing

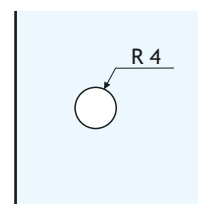


SK06

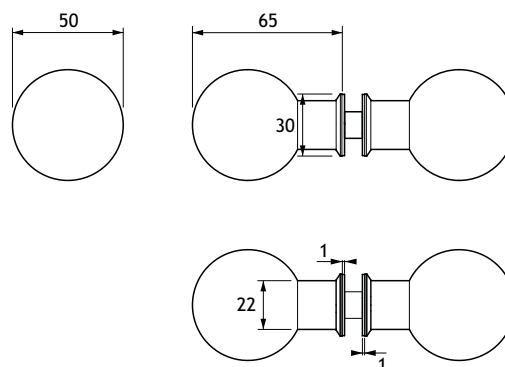
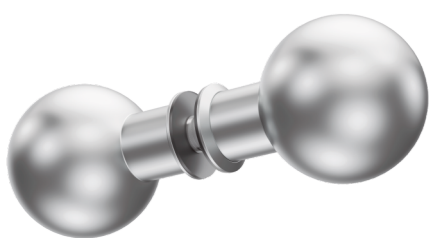


Coppia di pomoli a sezione quadrata con presa per box doccia e porte in vetro
Meccanismo interno di centratura
Realizzati in fusione di ottone

Pair of square section knobs with handle grip for shower rooms and glass doors
Inner centering device
Diecast brass manufacturing

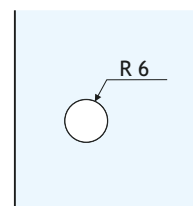
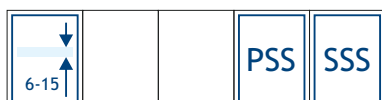


SK08



Coppia di pomoli sferici per box doccia e porte in vetro
Realizzati in fusione di acciaio inox Aisi 304

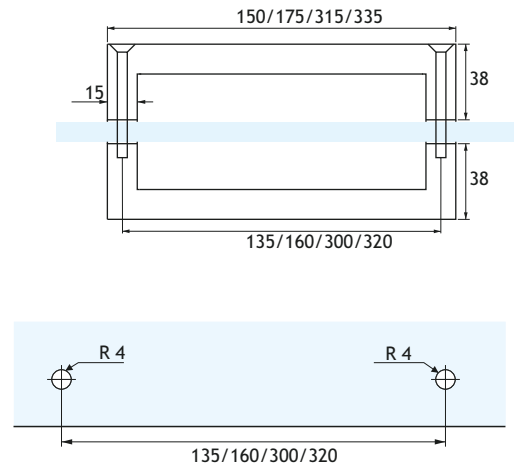
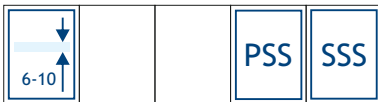
Pair of spherical knobs for shower rooms and glass doors
Diecast Aisi 304 stainless steel manufacturing



DH07

Coppia di maniglioni a sezione quadrata per box doccia e porte in vetro
Realizzati in acciaio inox Aisi 304
Interasse disponibili mm: 135, 160, 300, 320

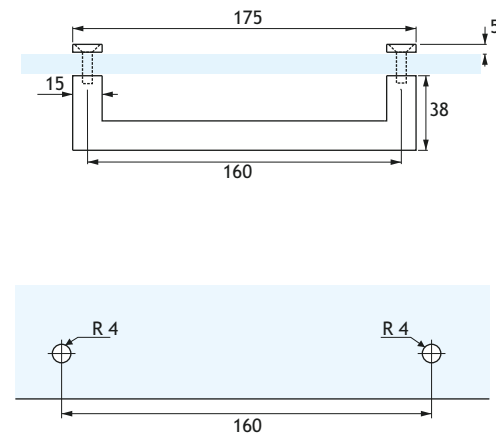
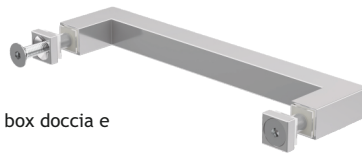
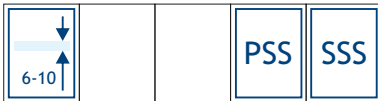
Pair of square section handles for shower rooms and glass doors
Aisi 304 stainless steel manufacturing
Available c/c mm: 135, 160, 300, 320



DH07S

Maniglione singolo a sezione quadrata per box doccia e porte in vetro
Realizzato in acciaio inox Aisi 304
Interasse disponibile mm: 160

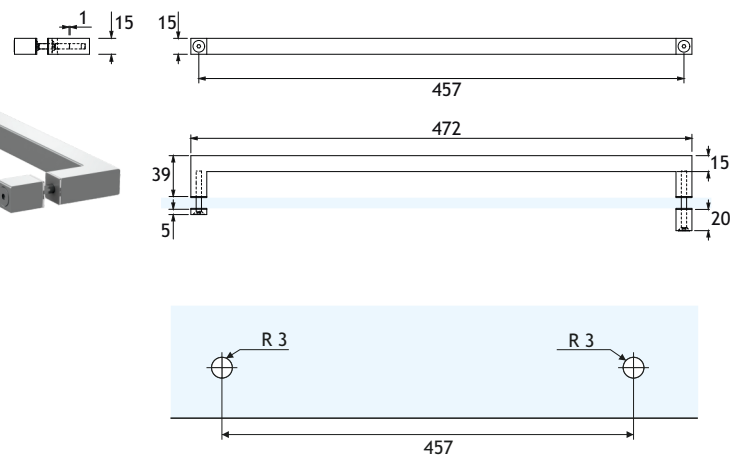
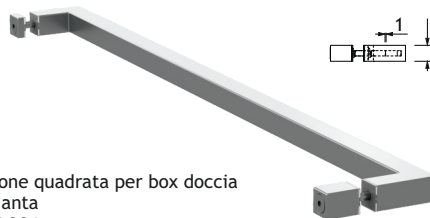
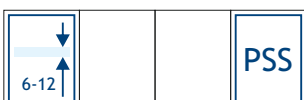
Square section single handle for shower rooms and glass doors
Aisi 304 stainless steel manufacturing
Available c/c mm: 160



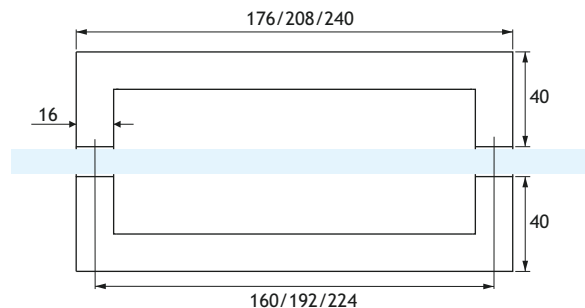
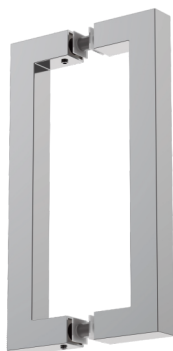
DHK01

Barra portasciugamani a sezione quadrata per box doccia
Pomolo interno per apertura anta
Realizzata in acciaio inox Aisi 304

Square section towel rail for shower rooms
Inner knob for door opening
Aisi 304 stainless steel manufacturing

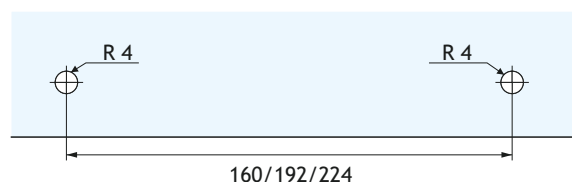


DH17

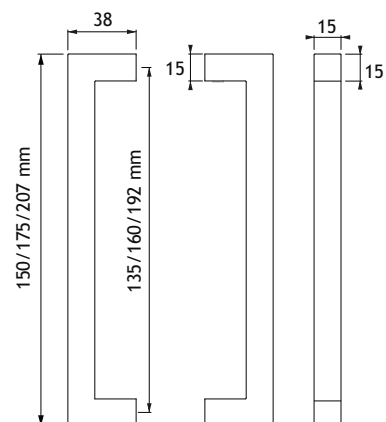
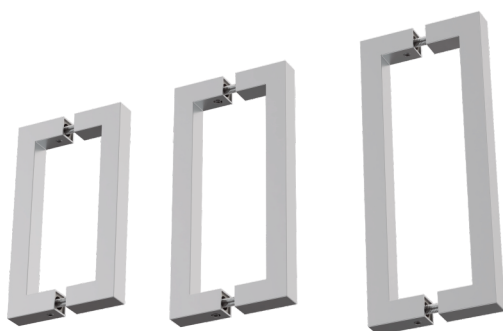


Coppia di maniglie a sezione quadrata per box doccia e porte in vetro
Sistema di fissaggio con grani nascosti, nessuna vite in vista
Realizzati in acciaio inox Aisi 304
Interasse disponibili mm: 160, 192 e 224

Pair of square section handles for shower rooms and glass doors
Concealed screws fixing system
Aisi 304 stainless steel manufacturing
Available c/c mm: 160, 192, 224

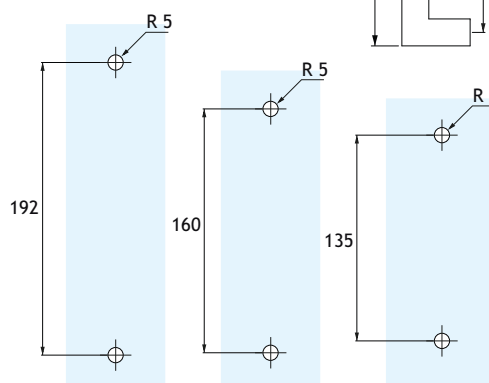


DH27

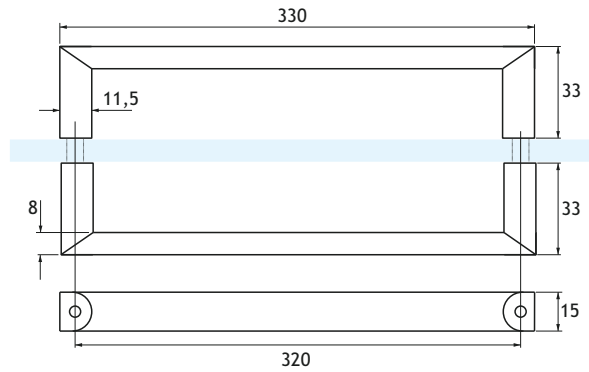
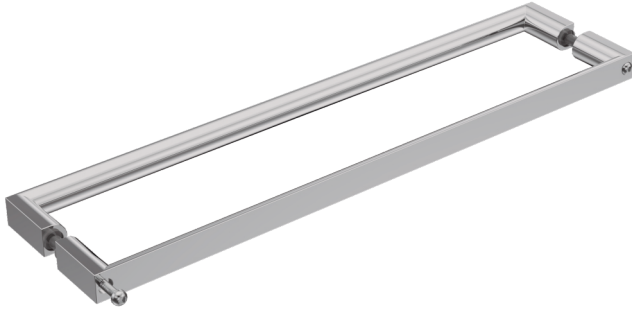


Coppia di maniglie a sezione quadrata per box doccia e porte in vetro
Sistema di fissaggio con grani nascosti, nessuna vite in vista
Realizzato in acciaio inox Aisi 304
Misure disponibili: sez. 15x15 mm inter. mm 135/160/192

Pair of square section handles for shower rooms and glass doors
Concealed screws fixing system
Aisi 304 stainless steel manufacturing
Available size: sect. 15x15 mm c/c mm 135/160/192

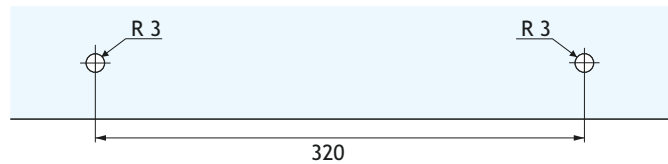
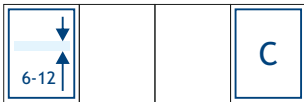


DH08

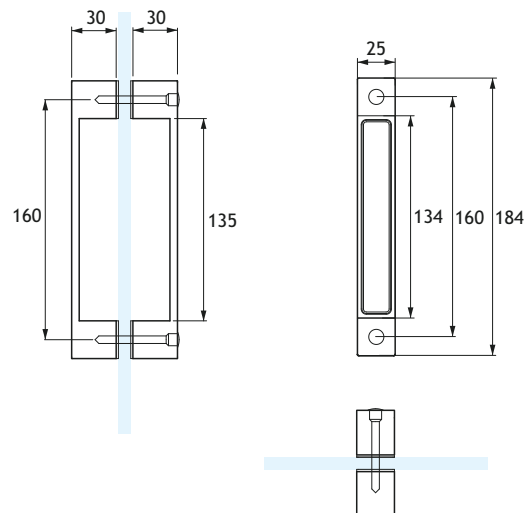


Coppia di maniglioni per box doccia e porte in vetro
Realizzati in lega di zinco
Interasse disponibile mm: 320

Pair of handles for shower rooms and glass doors
Diecast zinc alloy manufacturing
Available c/c mm: 320

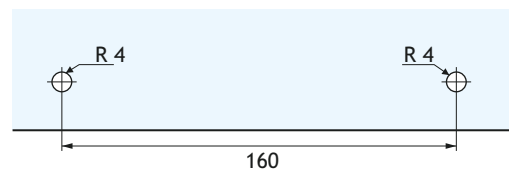
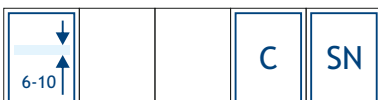


DH09

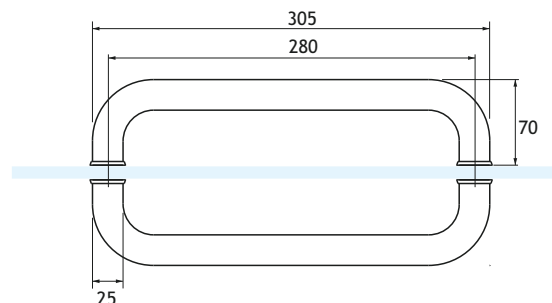


Coppia di maniglioni per box doccia e porte in vetro
Realizzati in lega di zinco
Interasse disponibile mm: 160

Pair of handles for shower rooms and glass doors
Diecast zinc alloy manufacturing
Available c/c mm: 160

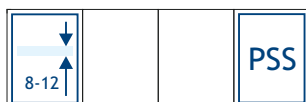
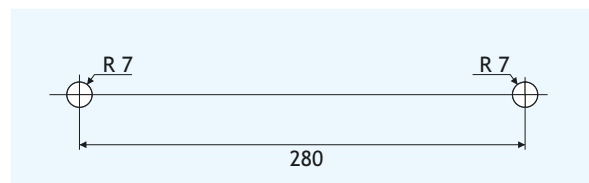


DH01

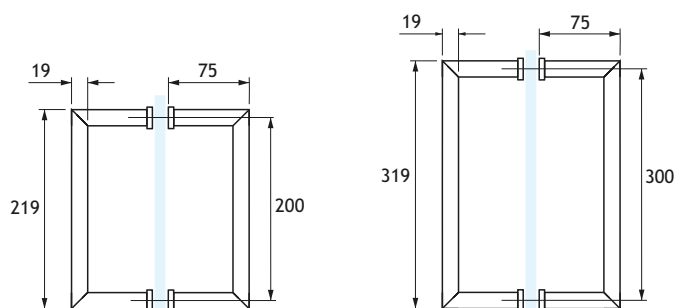
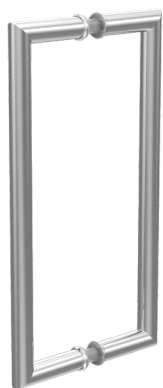


Coppia di maniglioni a sezione rotonda per porte in vetro
Realizzati in acciaio inox Aisi 304
Misure disponibili: diam. 25 mm inter. 280 mm

Pair of round section handles for glass doors
Aisi 304 stainless steel manufacturing
Available sizes: diam. 25 mm c/c 280 mm

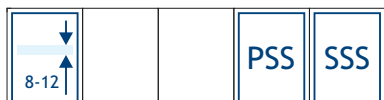
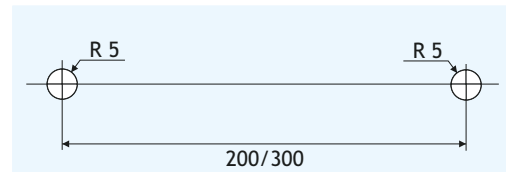


DH02

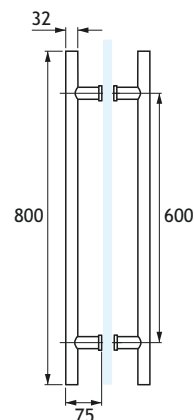
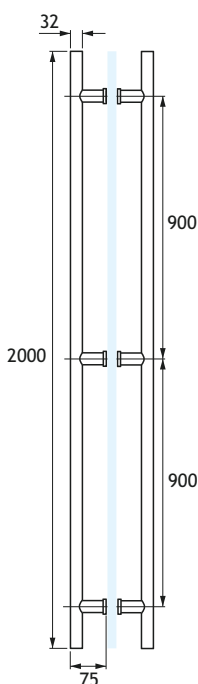
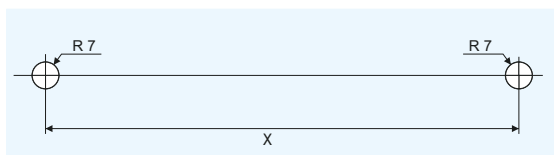
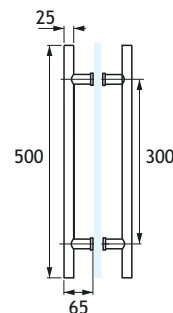
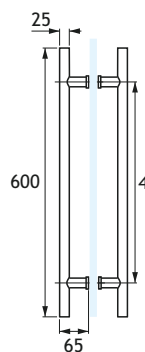
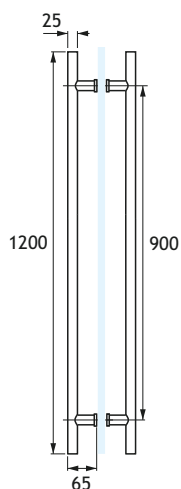
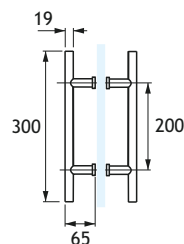
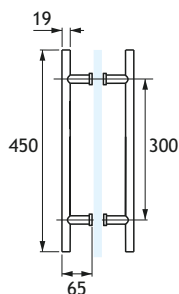


Coppia di maniglioni a sezione rotonda per porte in vetro
Realizzati in acciaio inox Aisi 304
Misure disponibili:
DH02A diam. 19 mm inter. 200 mm
DH02B diam. 19 mm inter. 300 mm

Pair of round section handles for glass doors
Aisi 304 stainless steel manufacturing
Available sizes:
DH02A diam. 19 mm c/c 200 mm
DH02B diam. 19 mm c/c 300 mm



DH03



Coppia di maniglia a barra sezione rotonda per porte in vetro
Realizzati in acciaio inox Aisi 304 e alluminio solo in certe misure*

Misure disponibili:

DH03E diam. 19 mm inter. 200 mm lungh. 300 mm*

DH03A diam. 19 mm inter. 300 mm lungh. 450 mm*

DH03A2 diam. 25 mm inter. 300 mm lungh. 500 mm

DH03 diam. 25 mm inter. 400 mm lungh. 600 mm*

DH03F diam. 25 mm inter. 500 mm lungh. 700 mm

DH03B diam. 25 mm inter. 900 mm lungh. 1200 mm

DH03D diam. 32 mm inter. 600 mm lungh. 800 mm

DH03C diam. 32 mm inter. 900+900 mm lungh. 2000 mm

Disponibili esecuzioni su misura per il solo diametro 25 mm

Pair of round section bar handles for glass doors

Aisi 304 stainless steel or aluminium only for some sizes* manufacturing

Available sizes:

DH03E diam. 19 mm c/c 200 mm length 300 mm*

DH03A diam. 19 mm c/c 300 mm length 450 mm*

DH03A2 diam. 25 mm c/c 300 mm length 500 mm

DH03 diam. 25 mm c/c 400 mm length 600 mm*

DH03F diam. 25 mm c/c 500 mm length 700 mm

DH03B diam. 25 mm c/c 900 mm length 1200 mm

DH03D diam. 32 mm c/c 600 mm length 800 mm

DH03C diam. 32 mm c/c 900+900 mm length 2000 mm

Customized production available only for 25 mm diameter



PSS

SSS

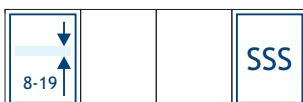
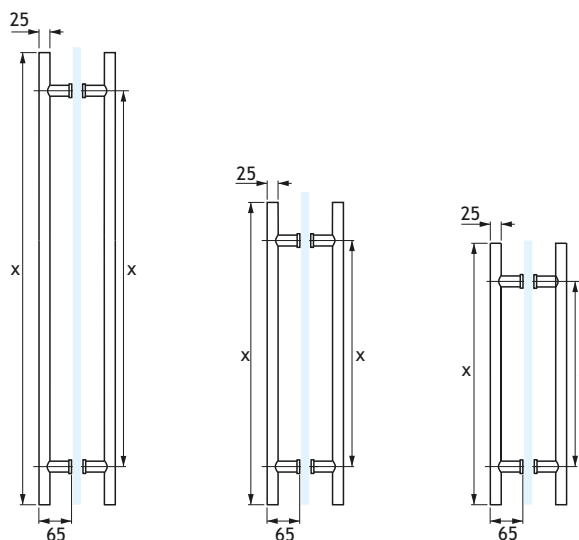
AA

DH03 CUSTOM

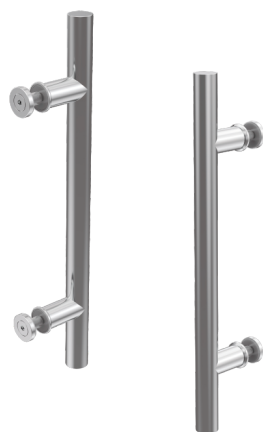


Coppia di maniglioni a sezione rotonda per porte in vetro
REALIZZATI SU MISURA con qualsiasi interasse e lunghezza
Realizzati in acciaio inox Aisi 304
Misura disponibile: diam. 25 mm

Pair of CUSTOMIZED round section handles for glass doors of
any achievable c/c and length
Aisi 304 stainless steel manufacturing
Available sizes: diam. 25 mm

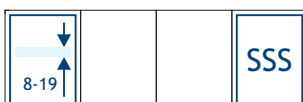
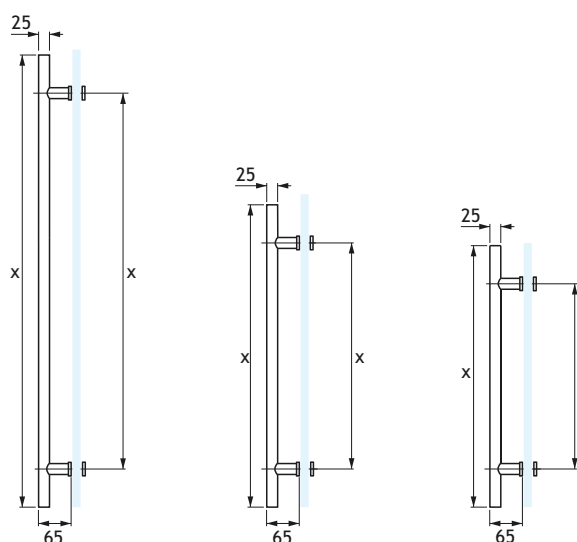


DH03S CUSTOM

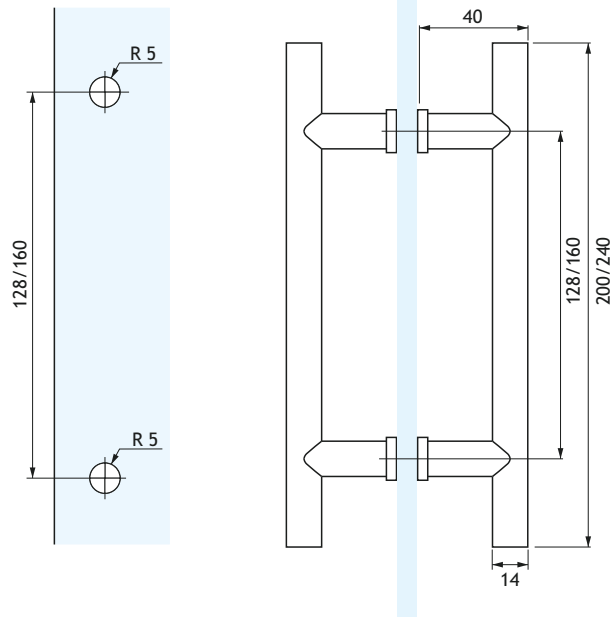


Maniglione singolo a sezione rotonda per porte in vetro
REALIZZATO SU MISURA con qualsiasi interasse e lunghezza
Realizzato in acciaio inox Aisi 304
Misura disponibile: diam. 25 mm

Single CUSTOMIZED round section handle for glass doors of
any achievable c/c and length
Aisi 304 stainless steel manufacturing
Available sizes: diam. 25 mm



DHS03



Coppia di maniglioni a barra sezione rotonda per box doccia e porte in vetro

Sistema di fissaggio con grani nascosti, nessuna vite in vista
Realizzati in tondino di acciaio inox Aisi 304

Misure disponibili:

DHS03A diam. 14 mm inter. 128 mm lungh. 200 mm

DHS03B diam. 14 mm inter. 160 mm lungh. 240 mm

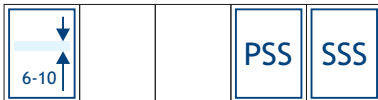
Pair of round section bar handles for shower rooms and glass doors
Concealed screws fixing system

Solid Aisi 304 stainless steel manufacturing

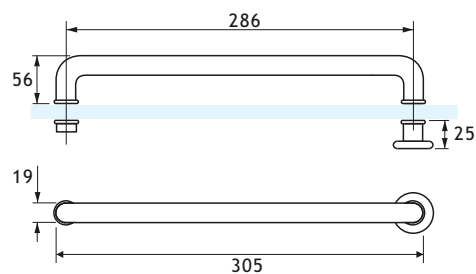
Available sizes:

DHS03A diam.14 mm c/c 128 mm length 200 mm

DHS03B diam.14 mm c/c 160 mm length 240 mm



DH04



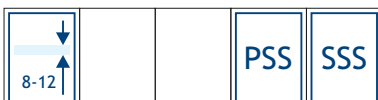
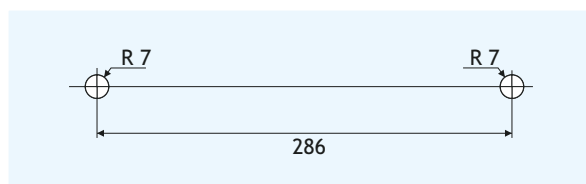
Maniglione a sezione rotonda con pomolo per porte in vetro
Realizzato in acciaio inox Aisi 304

Misura disponibile: diam. 19 mm inter. 286 mm

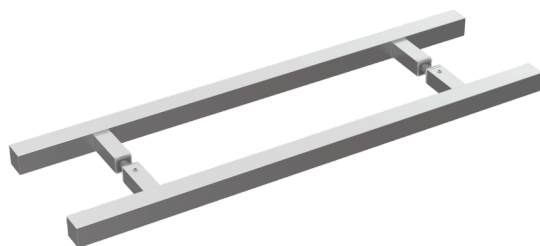
Glass doors round section handle with knob

Aisi 304 stainless steel manufacturing

Available size: diam. 19 mm c/c 286 mm



DH25



Coppia di maniglie a barra sezione quadrata per porte in vetro
Realizzati in acciaio inox Aisi 304

Misure disponibili:

DH25A sez. 19x19 mm inter. 300 mm lungh. 450 mm

DH25B sez. 25x25 mm inter. 300 mm lungh. 500 mm

DH25C sez. 25x25 mm inter. 400 mm lungh. 600 mm

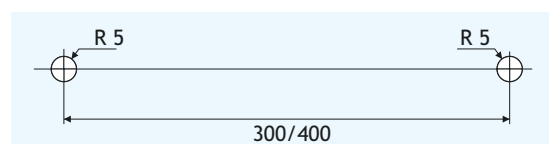
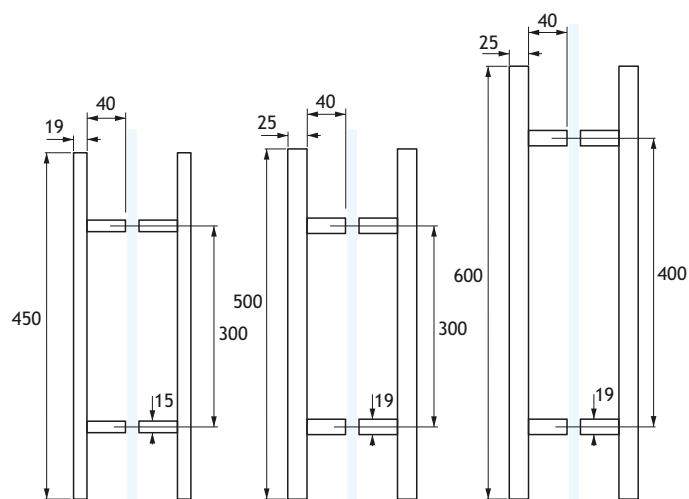
Pair of square section bar handles for glass doors
Aisi 304 stainless steel manufacturing

Available sizes:

DH25A sect. 19x19 mm c/c 300 mm length 450 mm

DH25B sect. 25x25 mm c/c 300 mm length 500 mm

DH25C sect. 25x25 mm c/c 400 mm length 600 mm



HB01



Borchia completa di vite per il fissaggio singolo dei
maniglioni tondi serie DH01, DH02, DH03

HB01 25 mm per maniglioni diam. 19

HB01 32 mm per maniglioni diam. 25

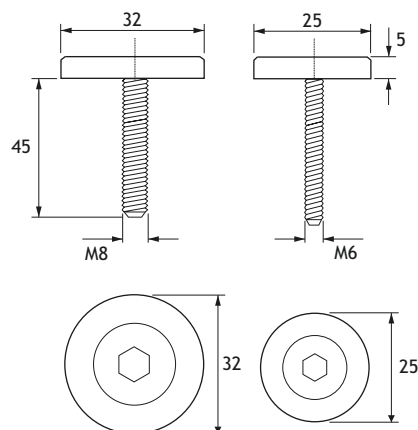
Realizzata in acciaio inox Aisi 304

Round cap with screws for DH01, DH02 and DH03 series in
single handle fixing

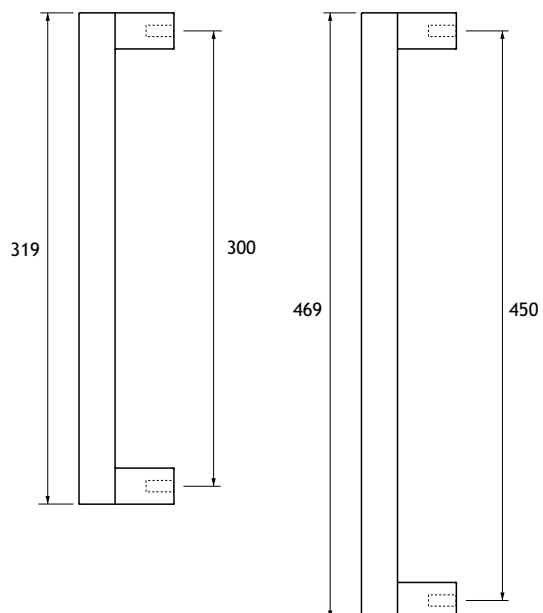
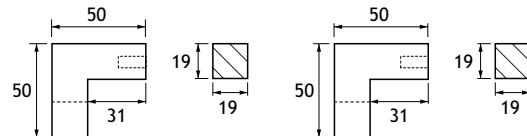
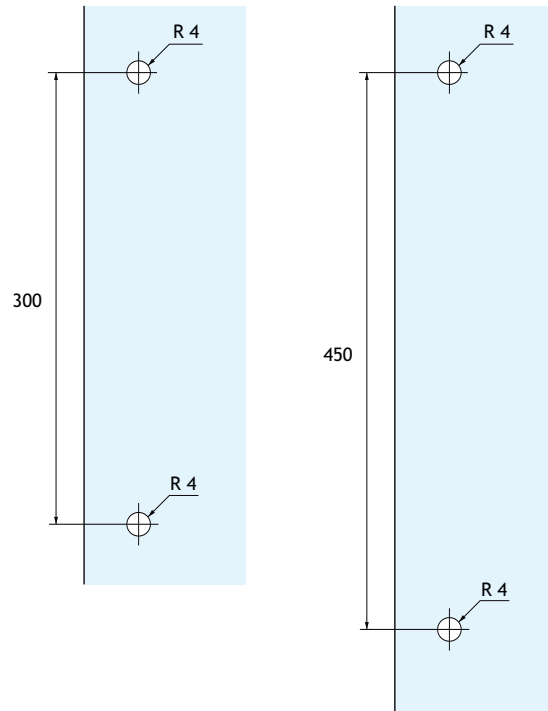
HB01 25 mm for 19 mm handles

HB01 32 mm for 25 mm handles

Aisi 304 stainless steel manufacturing



DH37



Coppia di maniglie a sezione quadrata per porte in vetro
Sistema di fissaggio con grani nascosti, nessuna vite in vista
Realizzati in acciaio inox Aisi 304
Misure disponibili:
sez. 19x19 mm inter. 300 mm lungh. 319 mm
sez. 19x19 mm inter. 450 mm lungh. 469 mm

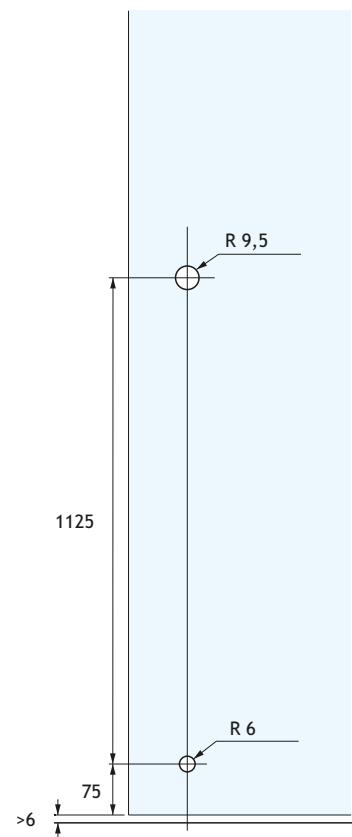
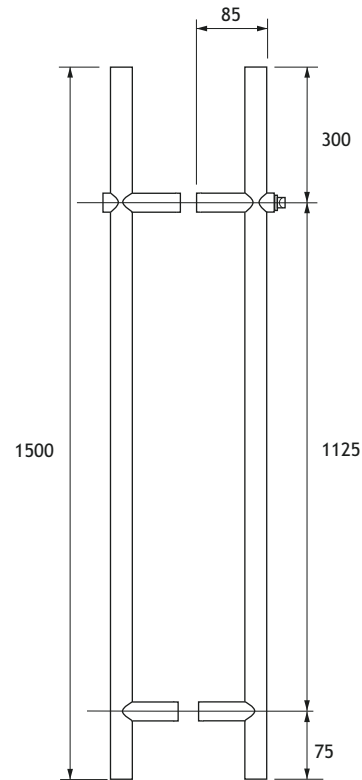
Pair of square section handles for glass doors
Concealed screws fixing system, no screws at sight
Aisi 304 stainless steel manufacturing
Available sizes:
sect. 19x19 mm c/c 300 mm lenght. 319 mm
sect. 19x19 mm c/c 450 mm lenght. 469 mm



DH37

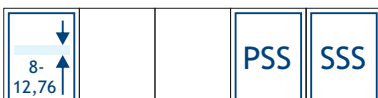


DLH01

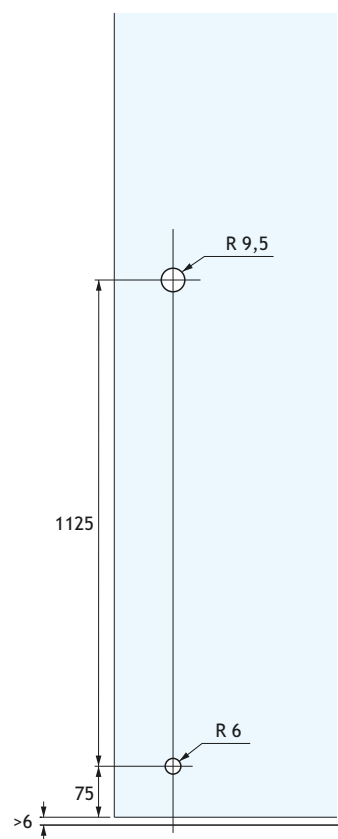
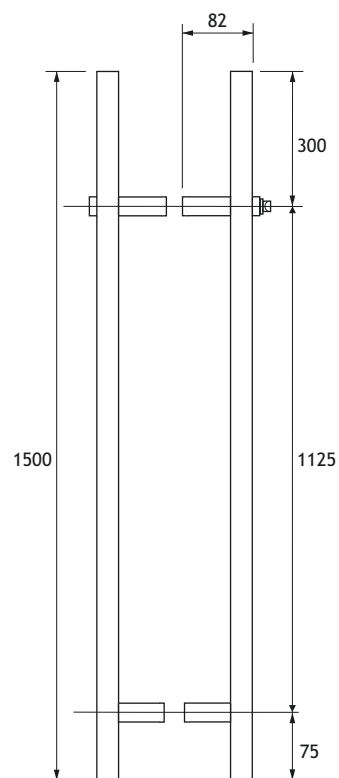
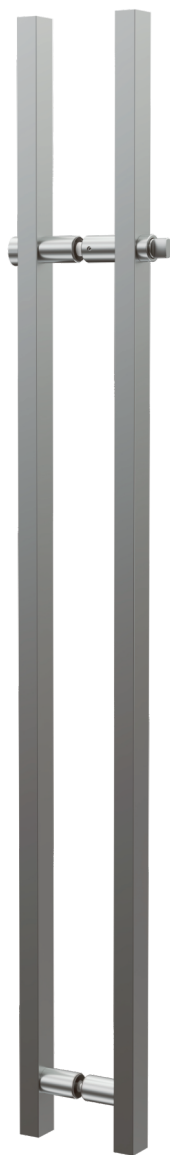


Coppia di maniglioni a barra sezione rotonda con serratura incorporata a pavimento per porte in vetro
Disponibile in versione chiave-pomolo
Bocchetta a pavimento e 4 chiavi comprese
Realizzati in acciaio inox Aisi 304
Lunghezza mm 1500, interasse mm 1125, diametro mm 35

Pair of round section bar handles with floor lock for glass doors
Key-knob cylinder available
Floor strike and 4 keys included
Aisi 304 stainless steel manufacturing
Lenght 1500 mm, c/c 1125 mm, diam. 35 mm

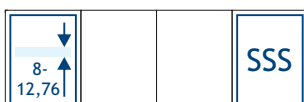


DLH02

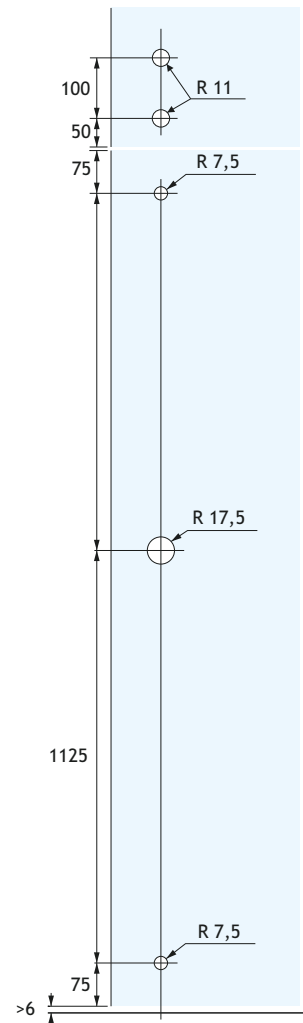
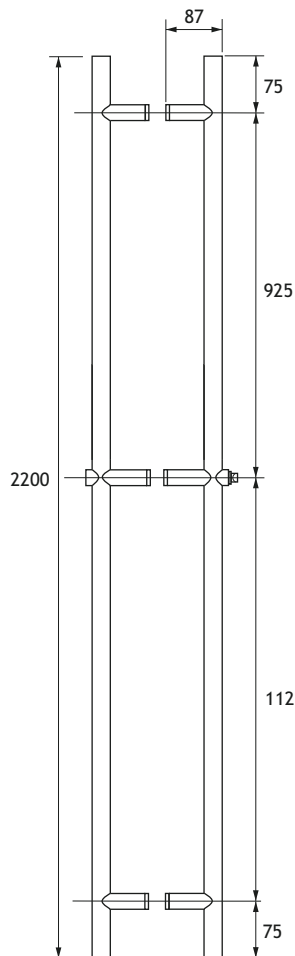
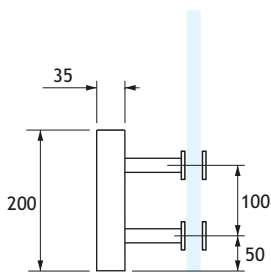
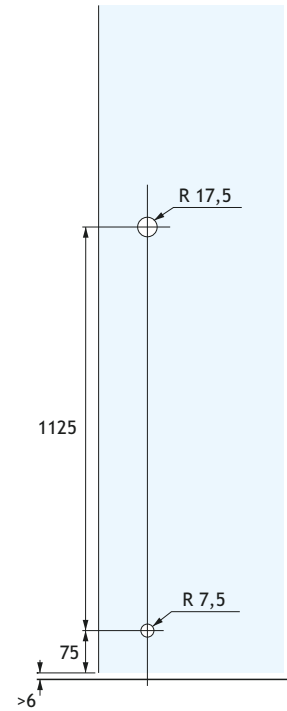
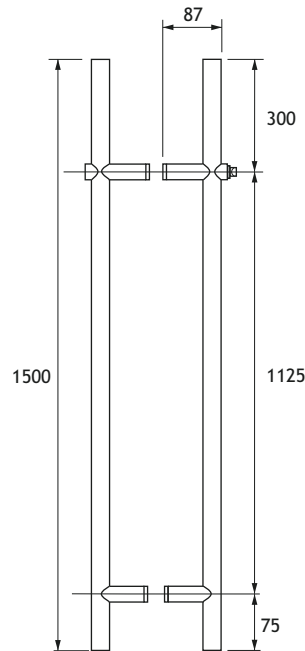


Coppia di maniglioni a barra sezione quadra con serratura incorporata a pavimento per porte in vetro
Disponibile in versione chiave-pomolo
Bocchetta a pavimento e 4 chiavi comprese
Realizzati in acciaio inox Aisi 304
Lunghezza mm 1500, interasse mm 1125, sezione mm 30x30

Pair of square section bar handles with floor lock for glass doors
Key-knob cylinder available
Floor strike and 4 keys included
Aisi 304 stainless steel manufacturing
Lenght 1500 mm, c/c 1125 mm, section 30x30 mm

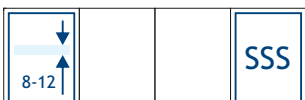


MLH02

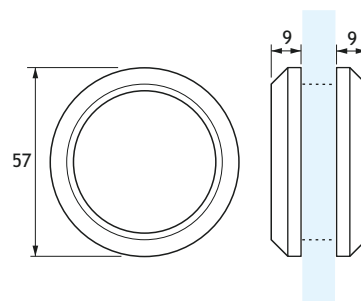


Coppia di maniglioni a barra sezione rotonda con serratura incorporata a pavimento per porte in vetro
Disponibile in versione chiave-pomolo o chiave-chiave
Bocchetta a pavimento e 4 chiavi comprese
Realizzati in acciaio inox Aisi 304
Lunghezza mm 1500, interasse mm 1125, diametro mm 35
Disponibile anche con lunghezza 2200 mm e incontro superiore per sopra luce opzionale

Pair of round section bar handles with floor lock for glass doors
Key-knob or key-key cylinder availables
Floor strike and 4 keys included
Aisi 304 stainless steel manufacturing
Lenght 1500 mm, c/c 1125 mm, diam. 35 mm
Also available 2200 mm lenght and overpanel strike on demand

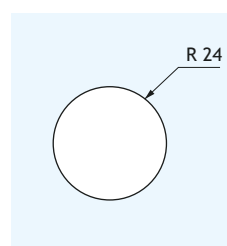


RH01

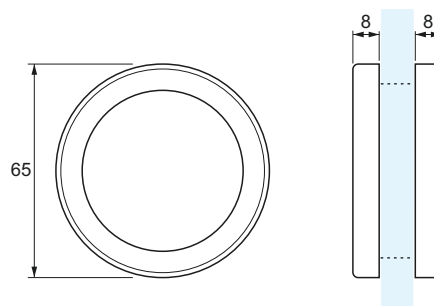


Maniglia ad anello chiusa per porte scorrevoli
Realizzata in acciaio inox Aisi 304 o alluminio

Closed ring handle for glass sliding doors
Aisi 304 stainless steel or aluminium manufacturing

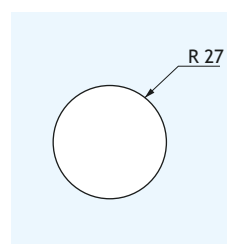
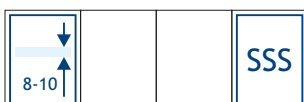


RH02

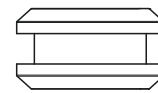
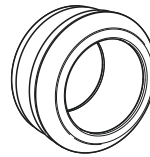
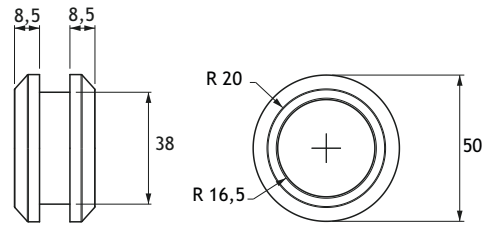


Maniglia ad anello aperta per porte scorrevoli
Realizzata in acciaio inox Aisi 304

Open ring handle for glass sliding doors
Aisi 304 stainless steel manufacturing

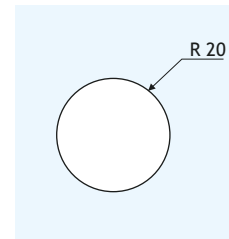
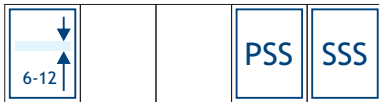


RH03

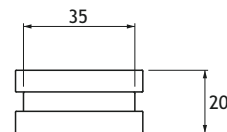
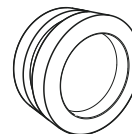
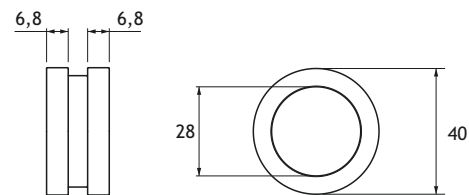


Maniglia ad anello aperta per porte scorrevoli
Realizzata in acciaio inox Aisi 304

Open ring handle for glass sliding doors
Aisi 304 stainless steel manufacturing

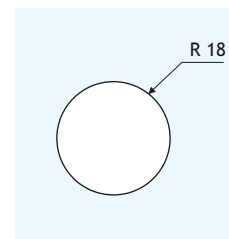
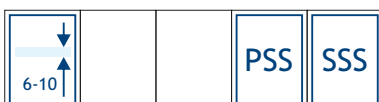


RH04



Maniglia ad anello chiusa per porte scorrevoli
Realizzata in acciaio inox Aisi 304

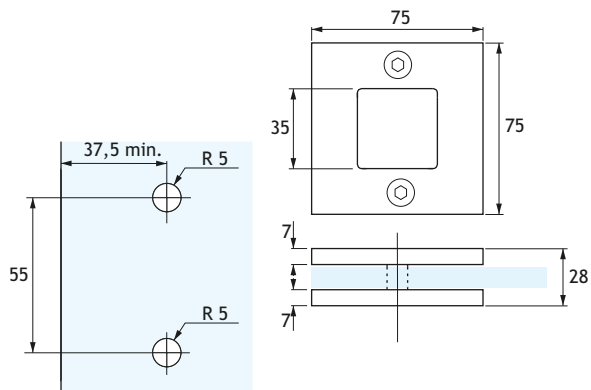
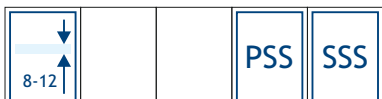
Closed ring handle for glass sliding doors
Aisi 304 stainless steel manufacturing



SRH01

Maniglia quadrata per porte scorrevoli
Realizzata in fusione di acciaio inox Aisi 304

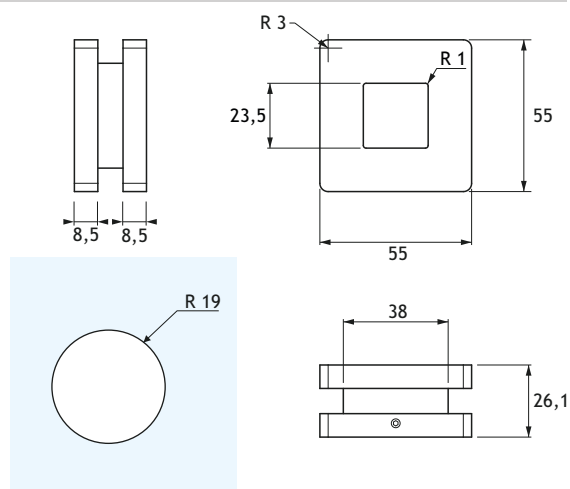
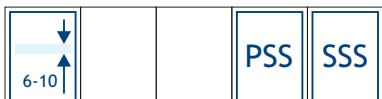
Squared handle for glass sliding doors
Diecast Aisi 304 stainless steel manufacturing



SRH02

Maniglia quadrata aperta per porte scorrevoli
Senza viti in vista
Realizzata in fusione di acciaio inox Aisi 304

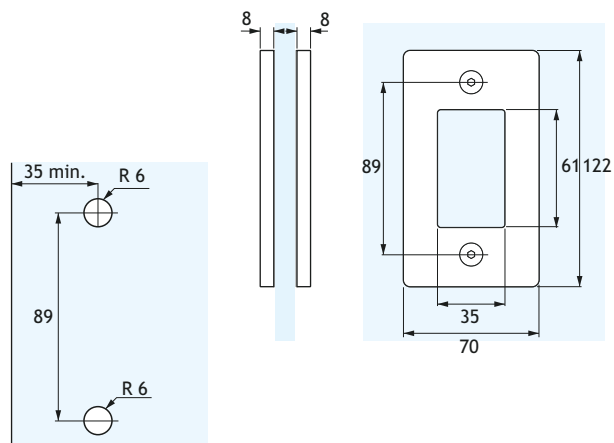
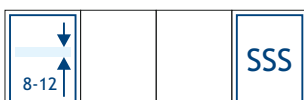
Open squared handle for glass sliding doors
Without screws at sight
Diecast Aisi 304 stainless steel manufacturing



SRH03

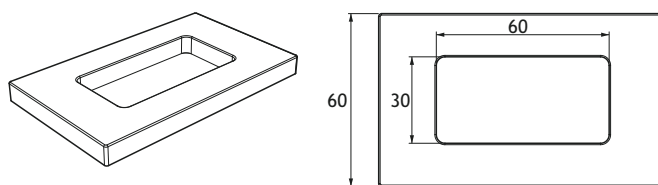
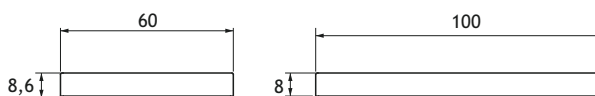
Maniglia rettangolare per porte scorrevoli
Realizzata in fusione di acciaio inox Aisi 304

Rectangular handle for glass sliding doors
Diecast Aisi 304 stainless steel manufacturing



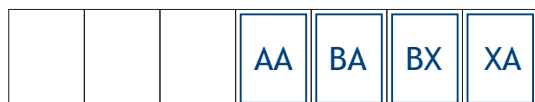
GRH01

AUTOADESIVE / SELF ADHESIVE



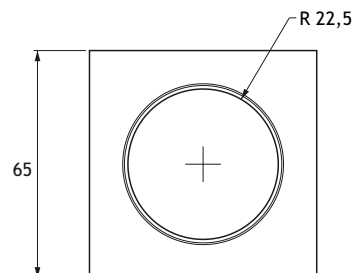
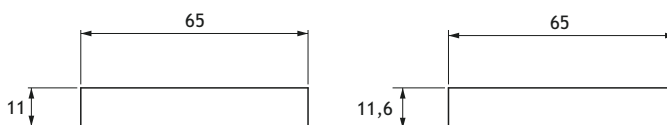
Coppia di maniglie rettangolari autoadesive per porte scorrevoli
Speciale adesivo 3M VHB® ad alta resistenza
Realizzate in lega di alluminio
Pulizia del vetro con alcool isopropilico consigliata

Pair of rectangular self-adhesive handles for glass sliding doors
Special high resistance 3M VHB® tape
Aluminium alloy manufacturing
Glass cleaning with isopropyl alcohol is recommended



GRH02

AUTOADESIVE / SELF ADHESIVE



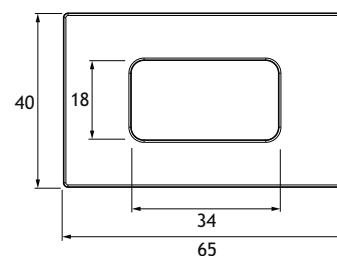
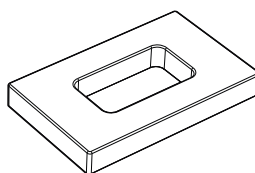
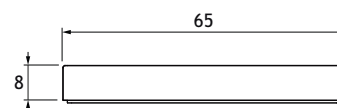
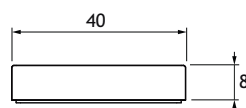
Coppia di maniglie autoadesive quadrate per porte scorrevoli
Speciale adesivo 3M VHB® ad alta resistenza
Realizzate in lega di alluminio
Pulizia del vetro con alcool isopropilico consigliata

Pair of squared self-adhesive for glass sliding doors
Special high resistance 3M VHB® tape
Aluminium alloy manufacturing
Glass cleaning with isopropyl alcohol is recommended



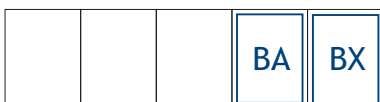
GRH03

AUTOADESIVE / SELF ADHESIVE



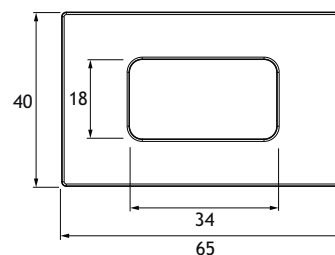
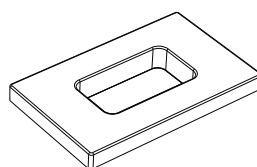
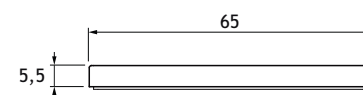
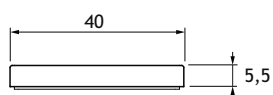
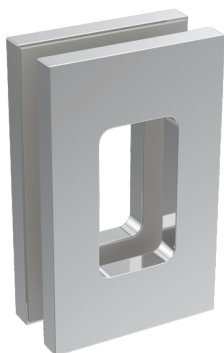
Coppia di maniglie autoadesive quadrate per porte scorrevoli
Speciale adesivo 3M VHB® ad alta resistenza
Realizzate in lega di alluminio
Pulizia del vetro con alcool isopropilico consigliata

Pair of squared self-adhesive for glass sliding doors
Special high resistance 3M VHB® tape
Aluminium alloy manufacturing
Glass cleaning with isopropyl alcohol is recommended



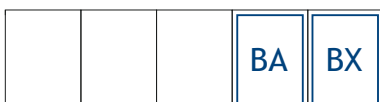
GRH03R

AUTOADESIVE / SELF ADHESIVE



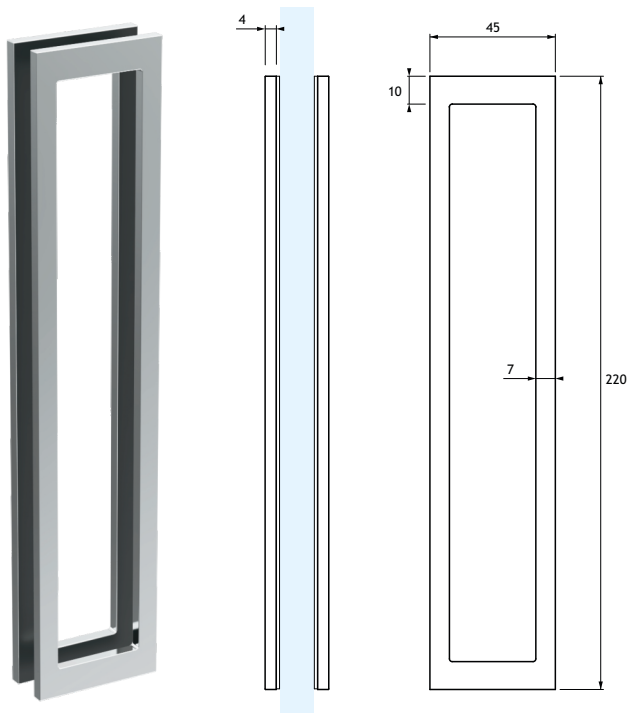
Coppia di maniglie rettangolari autoadesive per box doccia
Speciale adesivo 3M VHB® ad alta resistenza
Realizzate in lega di alluminio
Pulizia del vetro con alcool isopropilico consigliata

Pair of rectangular self-adhesive handles for shower cabin
Special high resistance 3M VHB® tape
Aluminium alloy manufacturing
Glass cleaning with isopropyl alcohol is recommended



GRH04

AUTOADESIVE / SELF ADHESIVE



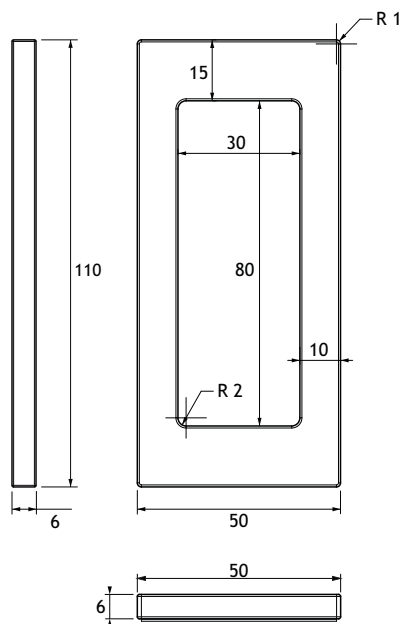
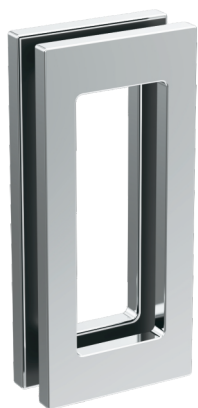
Coppia di maniglie rettangolari autoadesive per porte scorrevoli
Speciale adesivo 3M VHB® ad alta resistenza
Realizzate in lega di alluminio
Pulizia del vetro con alcool isopropilico consigliata

Pair of self-adhesive rectangular section handles for sliding doors
Special high resistance 3M VHB® adhesive
Aluminum alloy manufacturing
Glass cleaning with isopropyl alcohol is recommended



GRH05

AUTOADESIVE / SELF ADHESIVE



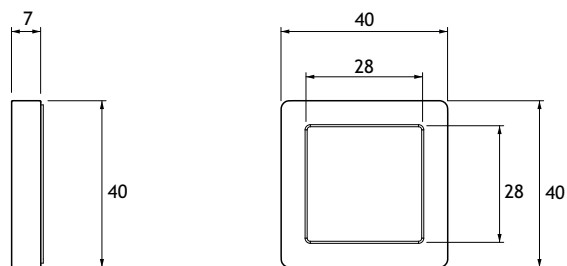
Coppia di maniglie rettangolari autoadesive per porte scorrevoli
Speciale adesivo 3M VHB® ad alta resistenza
Realizzate in lega di alluminio
Pulizia del vetro con alcool isopropilico consigliata

Pair of self-adhesive rectangular section handles for sliding doors
Special high resistance 3M VHB® adhesive
Aluminum alloy manufacturing
Glass cleaning with isopropyl alcohol is recommended



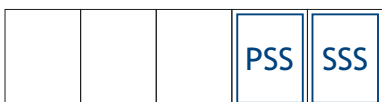
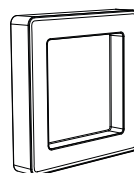
SRHA01

AUTOADESIVE / SELF ADHESIVE



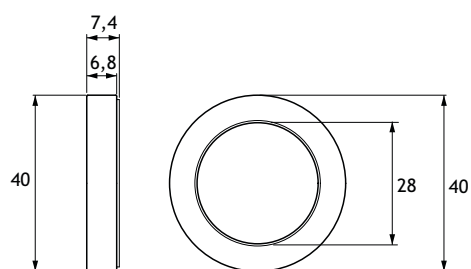
Coppia di maniglie quadrate autoadesive per porte scorrevoli
Speciale adesivo 3M VHB® ad alta resistenza
Realizzata in acciaio inox Aisi 304
Pulizia del vetro con alcool isopropilico consigliata

Pair of self-adhesive squared handles for glass sliding doors
Special high resistance 3M VHB® tape
Aisi 304 stainless steel manufacturing
Glass cleaning with isopropyl alcohol is recommended



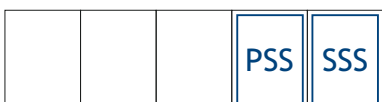
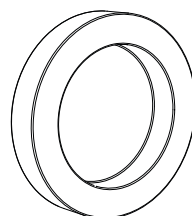
RHA04

AUTOADESIVE / SELF ADHESIVE



Coppia di maniglie tonde autoadesive per porte scorrevoli
Speciale adesivo 3M VHB® ad alta resistenza
Realizzata in acciaio inox Aisi 304
Pulizia del vetro con alcool isopropilico consigliata

Pair of self-adhesive round handles for glass sliding doors
Special high resistance 3M VHB® tape
Aisi 304 stainless steel manufacturing
Glass cleaning with isopropyl alcohol is recommended

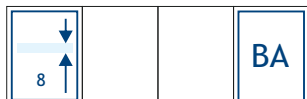
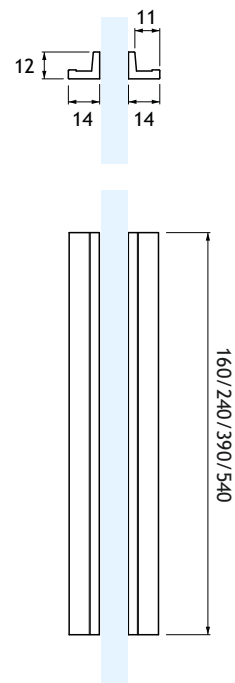


IPH01

AUTO ADESIVE / SELF ADHESIVE

Coppia di maniglie per box doccia scorrevoli
Non richiedono la foratura del vetro
Il design è studiato per consentire un'apertura agevole
anche nelle soluzioni a doppia anta a 90°
Fissaggio a vetro mediante bi-adesivo VHB® 3M resistente
all'acqua, al calore, alle dilatazioni termiche
Realizzate in lega di alluminio
Disponibili in lunghezza 160, 240, 390 e 540 mm

Pair of sliding shower doors handles
Not requiring glass drilling
The design is studied to allow comfortable opening even in
90° double-door solutions
Fixed to the glass with water, heat, and thermal dilatation
Resistant 3M VHB® adhesive tape
Aluminium alloy manufacturing
Available 160, 240, 390, 540 mm lengths

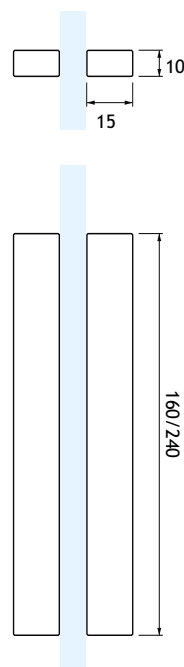


IPH02

AUTOADESIVE / SELF ADHESIVE

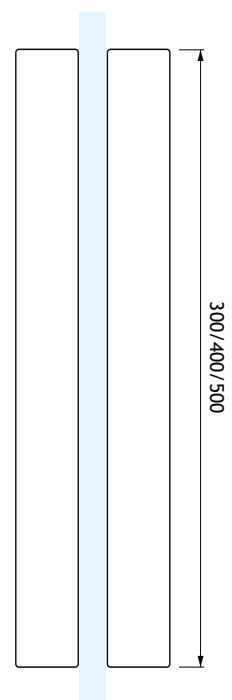
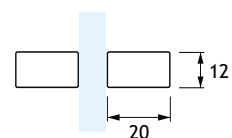
Coppia di maniglie autoadesive a sezione rettangolare per
porte scorrevoli
Speciale adesivo 3M VHB® ad alta resistenza
Realizzate in lega di alluminio
Pulizia del vetro con alcool isopropilico consigliata
Disponibili in lunghezza 160 e 240 mm

Pair of self-adhesive rectangular section handles for sliding
doors
Special high resistance 3M VHB® adhesive
Aluminum alloy manufacturing
Glass cleaning with isopropyl alcohol is recommended
Available 160 and 240 mm lengths



IPH03

AUTOADESIVE / SELF ADHESIVE



Coppia di maniglie autoadesive sezione rettangolare per porte scorrevoli
Speciale adesivo 3M VHB® ad alta resistenza
Realizzate in lega di alluminio
Pulizia del vetro con alcool isopropilico consigliata
Disponibili in lunghezza 300, 400 e 500 mm

Pair of self-adhesive rectangular section handles for sliding doors
Special high resistance 3M VHB® adhesive
Aluminum alloy manufacturing
Glass cleaning with isopropyl alcohol is recommended
Available 300, 400 and 500 mm lengths



IPA

Alcool isopropilico in confezione spray 200 ml
Da utilizzarsi per la pulizia del vetro
Indispensabile per la corretta adesione di guarnizioni e maniglie autoadesive

Isopropyl alcohol in spray pack, 200 ml
To be used for glass cleaning
Essential for the proper adhesion of self-adhesive handles and seals

